



# **INERTIAL PRODUCTS**

**IP DATA LOGGER TOOL USER GUIDE**



## Document Revision History

| <b>Edition</b> | <b>Date</b> | <b>Release</b> | <b>Comments</b>                         |
|----------------|-------------|----------------|---|
| A              | 02/2015     | Rev. 2.00      | Creation                                |
| B              | 03/2015     | Rev. 2.00      | New style guide updated to the document |

## Copyright

All rights reserved. No part of this manual may be reproduced or transmitted, in any form or by any means, whether electronic, printed manual or otherwise, including but not limited to photocopying, recording or information storage and retrieval systems, for any purpose without prior written permission of iXBlue.

## Disclaimer

iXBlue specifically disclaims all warranties, either expressed or implied, included but not limited to implied warranties of merchantability and fitness for a particular purpose with respect to this product and documentation. iXBlue reserves the right to revise or make changes or improvements to this product or documentation at any time without notify any person of such revision or improvements.

In no event shall iXBlue be liable for any consequential or incidental damages, including but not limited to loss of business profits or any commercial damages, arising out of the use of this product.

## Trademarks

Microsoft, MS-DOS and Windows are registered trademarks of Microsoft Corporation.

Intel and Pentium are registered trademarks and Celeron is a trademark of Intel Corporation.

## Software License Agreement

PLEASE READ THIS SOFTWARE LICENSE AGREEMENT CAREFULLY BEFORE INSTALLING OR USING THE SOFTWARE.

### Grant of license

iXBlue grants you a nonexclusive and nontransferable license to use the enclosed iXBlue software in the manner provided below:

- you may make up to two (2) copies of the software for archival or backup purposes, provided that you reproduce proprietary notices.

### Restrictions

- You shall not share by any means, other than by agreement with iXBlue, the software licenses between multiple computers.
- You shall not copy the software except as set forth in the section above. Any copy of the software that you make must contain the same copyright and other proprietary notices that appear on or in the software.
- You shall not modify, adapt or translate the software. You shall not reverse engineer, decompile, disassemble or otherwise attempt to modify or discover the source code of the software.
- You shall not install, neither operate the software on virtual machines.
- You shall not, rent, lease, sublicense, assign or transfer your rights in the software without prior written authorization from iXBlue.

### Copyright

The software (including any images, animations and text incorporated into the software) is owned by iXBlue and protected by copyright laws and international treaty provisions.

### Maintenance / Data update

iXBlue offers software maintenance during the warranty period. This maintenance includes the delivery of minor documentary and software licenses. The major or intermediary updates are not included and shall be dealt with in a separate agreement. If the software supplied under license is an updated version, the licensee will only be allowed to use the software in order to replace versions of the same software previously and duly acquired under license.

### Technical support

Technical support is available free of charge during the warranty period:

- On iXBlue website: <http://www.ixblue.com/contact-ixblue-support-representative>
- By dedicated e-mail box: [support@ixblue.com](mailto:support@ixblue.com)
- 24/7 hotline: +33 1 30 08 98 98 (EMEA-LATAM), +1 (888) 600-7573 Ext2 (NORAM), +65 6747 7027 (APAC)

iXBlue reserves the right to proceed to all the necessary verifications in order to be assured of the buyer's observance of the aforementioned conditions.

### Out-of-court settlement, choice of jurisdiction

Both parties will do their utmost to bring an end to disputes relative to the interpretation and/or the execution of this document by settling an agreement between their respective management. If an agreement has not been reached within three months, the dispute will be decided by the Paris tribunal jurisdiction.

## Limited Warranty

**Warranty period** iXBlue guarantees that the software will perform substantially in accordance with the accompanying written materials for a period of twelve (12) months from the date of shipment.

**Customer Remedies** iXBlue's entire liability and your exclusive remedy shall be, at iXBlue's option, repair or replacement of the software that does not meet iXBlue's Limited Warranty. Warranty service is F.O.B. iXBlue France. All shipping and insurance costs to iXBlue are paid for by the buyer; shipping and insurance costs returning to the buyer will be paid for by iXBlue.

On-site Customer Service and Warranty Repair may be provided by iXBlue, at its own discretion. Travel and accommodation (including travel hours, transportation, lodging and meals) will be charged by iXBlue to the Buyer at cost plus ten (10) per cent. However, actual labor hours to provide this service or repair will be free of charge to the Buyer. This Limited Warranty is void if failure of the software or hardware has resulted from accident, abuse, or misapplication. Any replacement software or hardware will be guaranteed for the remainder of the original warranty period or thirty (30) days, whichever is longer.

**Limitations** iXBlue makes no other warranties than the above limited warranties. iXBlue makes no warranties, expressed, implied, statutory, or in any communication with you, and iXBlue specifically disclaims any implied warranty of merchantability or fitness for a particular purpose. iXBlue does not warrant that the operation of the program will be uninterrupted or error free. The buyer agrees that the responsibility, without tort liability, or the responsibility related to the warranty shall not exceed the price paid for the acquisition of the product.

**Liability** To the maximum extent permitted by applicable law, in no event shall iXBlue be liable for any damages whatsoever (including, without limitation, damages for loss of business profits, business interruption, loss of business information, or any other pecuniary loss) arising out of the use of or inability to use this iXBlue product, even if iXBlue has been advised of the possibility of such damages.

This application program is only to be used in order to help optimize fishing and shall not exempt the skipper of his responsibilities in terms of navigation security and respect for law enforcement.

## Text Usage

|                      |   |
|----------------------|---|
| <b>bold</b>          | Bold text is used for items you must select or click in the software. It is also used for the field names used into the dialog box.   |
| <code>Courier</code> | Text in this font denotes text or characters that you should enter from the keyboard, the proper names of disk drives, paths, directories, programs, functions, filenames and extensions. |
| <i>italic</i>        | Italic text is the result of an action in the procedures.   |

## Icons



The **Note** icon indicates that the following information is of interest to the operator and should be read.

### Important

---

The **Important** mention indicates that the following information should be read to forbid or prevent a product dysfunction or a faulty operation of the equipment

---



The **Caution** icon indicates that the following information should be read to forbid or prevent product damage.

---



The **Warning** icon indicates that possible personal injury or death could result from failure to follow the provided recommendation.

---

## Table of Contents

|          |  |          |
|----------|--|----------|
| <b>1</b> | <b>OBJECT.....</b>                         | <b>7</b> |
| <b>2</b> | <b>USING THE IP DATA LOGGER TOOL .....</b> | <b>8</b> |



## 1 OBJECT

---

This document describes how to use the IP Data Logger tool.

This tool is designed to log system outputs for long-term data logging.

Do not hesitate to contact iXBlue technical support for further information:  
[support@ixblue.com](mailto:support@ixblue.com)

## 2 USING THE IP DATA LOGGER TOOL

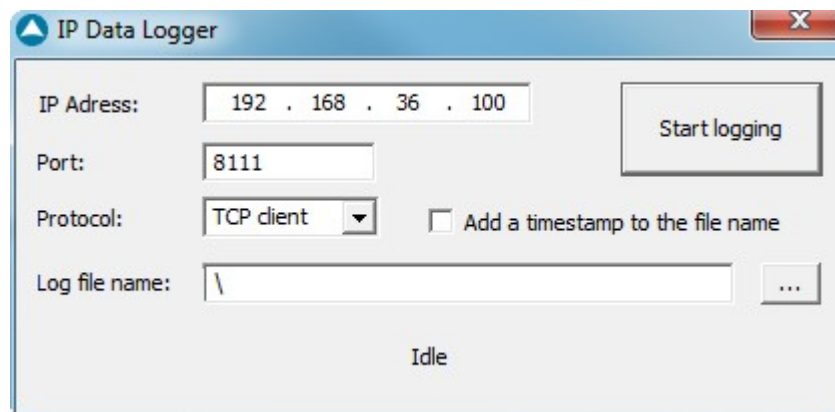
---

### Ethernet connection

Always use an Ethernet switch or hub between the product and the computer.

| Step | Action |
|------|--------|
|------|--------|

1. Double-click on the IPDataLogger2.0.exe file located on the product CD-ROM (\softwares\IXBlue directory). The following window is displayed:



2. Enter the **IP address** (only for TCP client): IP address of the product from which the data should be logged.
3. Enter the **Port**, for the TCP/UDP port.
4. Select the **Protocol** option in the list:
  - TCP client
  - TCP server
  - UDP
5. Tick the **Add a timestamp to the file name** option if needed.
6. Enter a **Log file name** by clicking on the ... button.  
Enter a different log file name when there is not the timestamp option.
7. Click on the **Start logging** button to start the data logging.  
In case of same file name without the timestamp option, a window is displayed to validate or not the overwriting.
8. Click on the **Stop logging** button to stop the data logging.
9. Once completed, close the tool by clicking on **X** button.
10. End of procedure.

## **iXBlue CONTACT - SUPPORT**

FOR NON-URGENT SUPPORT:

BY EMAIL: [support@ixblue.com](mailto:support@ixblue.com)

USING THE FORM ON THE IXBLUE WEB SITE [www.ixblue.com](http://www.ixblue.com)

FOR 24/7 URGENT SUPPORT:

**North America / NORAM**

**+1 (888) 600-7573 Ext 2**

**Europe Middle-East Africa Latin-America / EMEA-LATAM**

**+33 1 30 08 98 98**

**Asia Pacific / APAC**

**+65 6747 7027**

## **iXBlue CONTACT - SALES**

**North America / NORAM**

**+1 888 600 7573**

**iXBlue Inc Boston area US**

11 Erie Drive, Natick, MA 01760, US

**Europe Middle-East Africa Latin-America / EMEA-LATAM**

**+33 1 30 08 88 88**

**iXBlue SAS Marly France**

34 avenue de la Croix de Fer, Saint-Germain-en-Laye, 78100, France

**Asia Pacific / APAC**

**+65 6747 4912**

**iXBlue Pte Limited Singapore**

15A Changi Business Park Central 1 Eghtrium #04-02 Singapore, 486035