

# TARGET LOGGER

## SOFTWARE MODULE ADDENDUM

0018974\_REV\_B

3/8/2018

**EdgeTech**

4 Little Brook Road  
West Wareham, MA 02576

Tel: (508) 291-0057

Fax: (508) 291-2491

[www.EdgeTech.com](http://www.EdgeTech.com)

The information, figures, and specifications in this addendum are proprietary and are issued in strict confidence on condition that they not be copied, reprinted, or disclosed to a third party, either wholly or in part, without the prior, written consent of EdgeTech. Any reproduction of EdgeTech supplied software or file sharing is strictly prohibited.

EdgeTech © 2016 – 2018. All rights reserved.

## ABOUT THIS DOCUMENT

The purpose of this addendum is to provide the user with information on the setup and use of EdgeTech's Target Logger. Although this addendum encompasses the latest operational features of the Target Logger, some features may be periodically upgraded. Therefore, the information in this addendum is subject to change and should be used for reference only.

This addendum should be used in conjunction with the corresponding user software and hardware manuals.

### Liability

EdgeTech has made every effort to document the Target Logger in this addendum accurately and completely. However, EdgeTech assumes no liability for errors or for any damages that result from the use of this addendum or the equipment it documents. EdgeTech reserves the right to upgrade features of this equipment, and to make changes to this addendum, without notice at any time.

### Warnings, Cautions, and Notes

Where applicable, warnings, cautions, and notes are provided in this addendum as follows:

**CAUTION!** Identifies a potential hazard that could damage equipment or data.

**NOTE:** Recommendations or general information that is particular to the material being presented.

### Revision History

REVISION	DESCRIPTION	DATE	APPROVAL
A	Release to Customer	12/07/2016	CC
B	Updates to Target Logger	3/08/2018	HS

## SOFTWARE SERVICE OVERVIEW

EdgeTech provides software services free of charge. This software agreement does not address customer-specified modifications or enhancements. These services may be ordered separately. Furthermore, EdgeTech software upgrades are meant for the sole use of EdgeTech customers. Any reproduction of EdgeTech-supplied software or file sharing is strictly prohibited.

### Software Updates and Enhancements

EdgeTech customers can download new software releases with all modifications and enhancements from the Resources section of the EdgeTech website. Major software issues, should they occur, will be reported directly to the customer. New software releases consist of the following:

- Software enhancements that are not on the price list
- Software fixes and changes
- Product integration
- Documentation updates to on-line help
- Tests for compatibility with other modules

Software patches consist of software that has undergone the following:

- Minor software enhancements
- Software fixes and changes

EdgeTech customers are entitled to contact [EDGE TECH CUSTOMER SERVICE](#) by telephone or e-mail to report a difficulty, to discuss a problem or to receive advice on the best way to perform a task. When contacted, EdgeTech Customer Service will do the following:

- Respond within 24 hours via Telephone and E-mail Support
- Immediately attend to serious problems affecting operations
- Attempt to find an immediate work-around

## CUSTOMER SERVICE

Customer service personnel at EdgeTech are always eager to hear from users of our products. Your feedback is welcome, and is a valuable source of information which we use to continually improve these products. Therefore, we encourage you to contact EdgeTech Customer Service to offer any suggestions or to request technical support:

**NOTE:** Please have the Target Logger version available when contacting customer service. Clicking on the version in the *Help > About* box in the Target Logger window will copy it to your clipboard.

**E-mail:** service@edgetech.com

**Mail:** 4 Little Brook Road  
West Wareham, MA 02576

**Telephone:** (508) 291-0057

**Facsimile:** (508) 291-2491

**24-Hour Emergency  
Technical Support Line:** (508) 942-8043

For more information please go to [www.EdgeTech.com](http://www.EdgeTech.com).

## COMPANY BACKGROUND

EdgeTech (formerly EG&G Marine Instruments) traces its history in underwater data acquisition and processing back to 1966. EdgeTech has designed, developed, and manufactured products, instruments, and systems—for the acquisition of underwater data, including marine, estuarine, and coastal applications—for over 50 years.

The company has responded to the needs of the scientific, Naval, and offshore communities by providing equipment—such as sub-bottom profilers, side scan sonar, acoustic releases, USBL positioning systems, and bathymetric systems—that have become standards in the industry.

EdgeTech has also consistently anticipated and responded to future needs through an active research and development program. Current efforts are focused on the application of cutting-edge CHIRP and acoustic technology.

# TABLE OF CONTENTS

<b>ABOUT THIS DOCUMENT</b> .....	<b>iii</b>
Liability.....	iii
Warnings, Cautions, and Notes.....	iii
Revision History .....	iii
<b>SOFTWARE SERVICE OVERVIEW</b> .....	<b>iv</b>
Software Updates and Enhancements.....	iv
<b>CUSTOMER SERVICE</b> .....	<b>v</b>
<b>COMPANY BACKGROUND</b> .....	<b>vi</b>
<b>TABLE OF CONTENTS</b> .....	<b>vii</b>
<b>LIST OF FIGURES</b> .....	<b>ix</b>
<b>1.0 OVERVIEW</b> .....	<b>1-1</b>
<b>2.0 OPERATION</b> .....	<b>2-1</b>
2.1 Selecting a Target in DISCOVER .....	2-1
2.2 Target Catalog.....	2-2
2.3 Target Windows.....	2-3
2.4 Menu Bar .....	2-2
2.4.1 File Menu .....	2-2
2.4.1.1 Open Survey .....	2-2
2.4.1.2 Open Survey Folder in File Explorer .....	2-2
2.4.1.3 Options .....	2-3
2.4.2 Target Reports .....	2-3
2.4.3 View Menu.....	2-4
2.4.4 Window Menu .....	2-4
2.4.4.1 Save Window Layout .....	2-4
2.4.4.2 Apply Window Layout.....	2-4
2.4.4.3 Manage Window Layouts .....	2-4
2.4.4.4 Reset Window Layout.....	2-4
2.4.5 Help Menu .....	2-5
2.4.5.1 Target Logger Help .....	2-5
2.4.5.2 Creative Log Archive .....	2-5

2.4.6 About .....2-5



# LIST OF FIGURES

Figure 2-1: Target Logger Main Window .....2-1

Figure 2-2: Target Catalog.....2-2

Figure 2-3: Target Windows.....2-3

Figure 2-4: File Menu Drop-Down Options.....2-2

Figure 2-5: Options Dialogue Box .....2-3

Figure 2-6: Target Reports Window.....2-3

Figure 2-7: View Menu Drop-Down Options .....2-4

Figure 2-8: Window Menu Drop-Down Options.....2-4

Figure 2-9: Help Menu Drop-Down Options .....2-5

Figure 2-10: About Target Logger .....2-5



## 1.0 OVERVIEW

EdgeTech's DISCOVER Target Logger is used for feature mensuration, logging, and recall. A mouse right-click in the sonar data waterfall display causes DISCOVER to select an area of imagery, centered about the current cursor location. This area of imagery is displayed in full resolution in the Target Logger main window. The default window size of the target image is 200 vertical display lines by the full sonar range. The vertical size for the window can be changed by modifying the 'TargetWindow' entry in the active DISCOVER Software initialization file (DISCOVERLastxxxx.Jni). Caution should be exercised before making this larger, to ensure adequate processor resources (RAM memory, CPU speed etc.) are available to handle larger data windows.

The Target Logger application is a separate executable, normally located in the same folder as the DISCOVER.exe application. (Typically: C:\Edgetech\DISCOVERxxxx-FS\DISCOVERTARGETLOGGER.exe). There is normally a shortcut on the user Desktop to the application. If the Target Logger is selected in the external features tab it will auto-start when DISCOVER is started otherwise it can be independently started either before or after DISCOVER.

When DISCOVER is running, the two applications share data to present the fish track history and coverage, and the Target Logger application provides marked and saved Target positions to the Coverage Mapper application. The DISCOVER Side Scan application must have a GPS receiver connected, providing valid position data during the survey.



## 2.0 OPERATION

Once a target is selected on the DISCOVER waterfall and the Target Logger application has launched, it will appear in the Target Catalog. From here, multiple options are available for obtaining information about the target and making annotations.

### 2.1 Selecting a Target in DISCOVER

As the sonar data is scrolling down the display, a target of interest may become visible in Discover. By placing the cursor over the target and right clicking, Target Logger will activate.

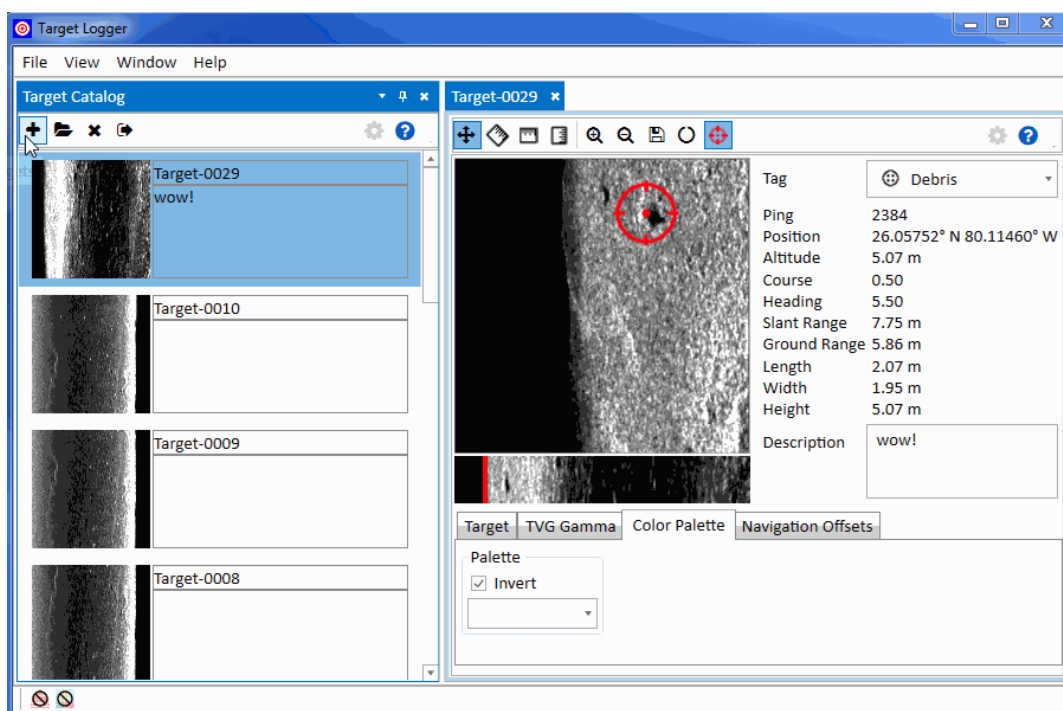


Figure 2-1: Target Logger Main Window

The target will then appear in the Target Catalog, and then double-clicking a target in the catalog opens it up in a Target Window on the right-hand section of the dialog box, as shown in **FIGURE 2-2**. Within the target window, the user can zoom, pan, save, and obtain the exact location, and measure object dimensions and height from shadow information. Several targets can be open at once. Targets can be put into the catalog by selecting files or choosing a target folder.

## 2.2 Target Catalog

The target catalog makes up the left-hand portion of the Target Logger window by default, and can be toggled to different places or left floating depending on user preference, as shown in [FIGURE 2-2](#).

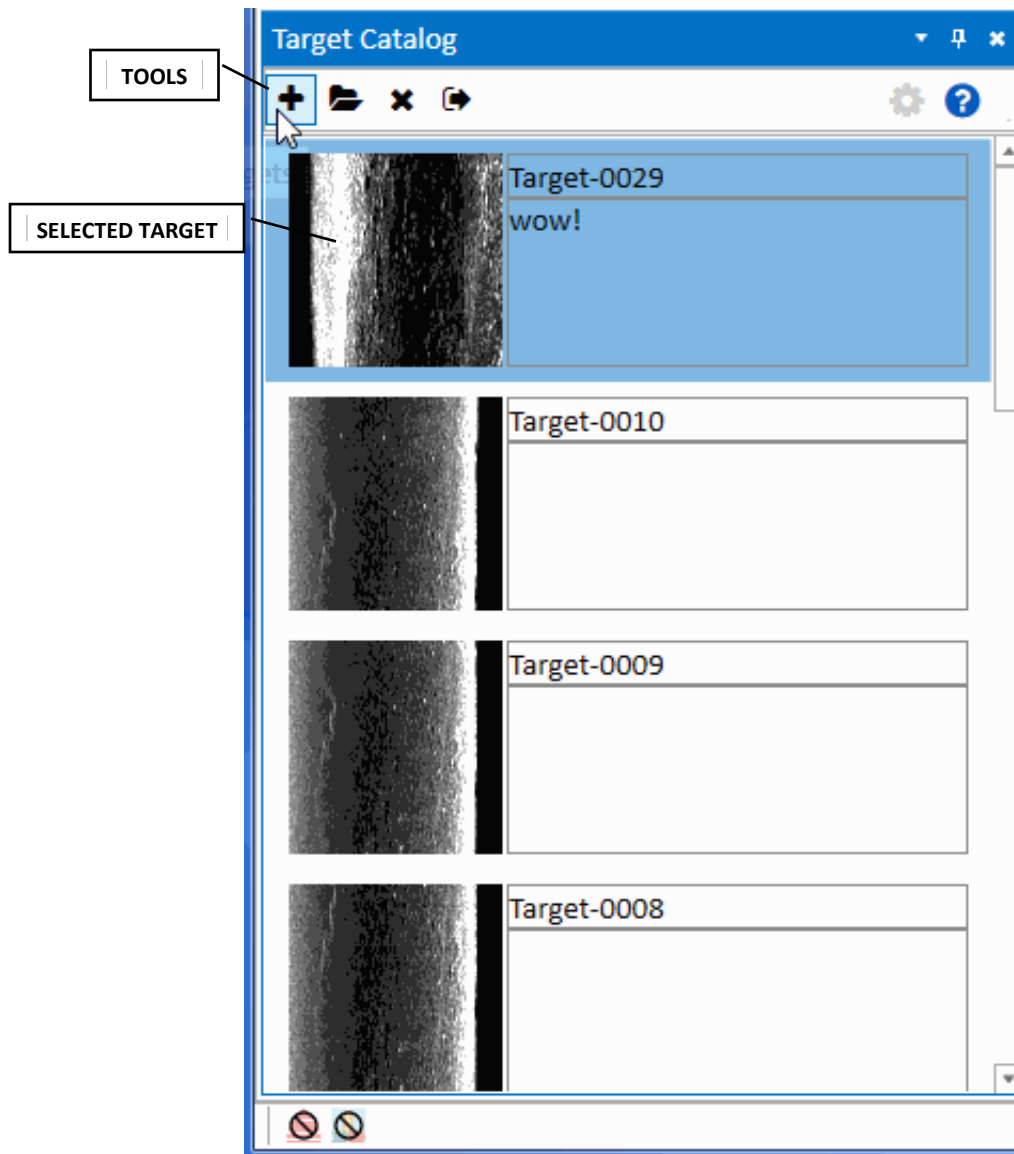


Figure 2-2: Target Catalog

The buttons on the top of the catalog perform the following functions (from left-to-right):

- Open targets
- Open targets from a folder
- Unload selected targets from the catalog
- Generate target reports (Refer to subsection [2.3](#))

Select multiple targets at once in the catalog by using the Ctrl and Shift keys. Double-clicking on a target opens it in a Target Window to the right of the catalog (it can also be moved to different locations depending on user preference). Multiple targets can be opened at once, but there is an upper limit, which the user will be notified of when reached.

**Note:** Removing a target from the catalog does not delete the file itself.

## 2.3 Target Windows

A Target Windows open to the right of the target catalog by default when a target is double-clicked, and contain detailed information about it, as shown in **FIGURE 2-3**. It can be moved to a different location on the screen depending on user preference.

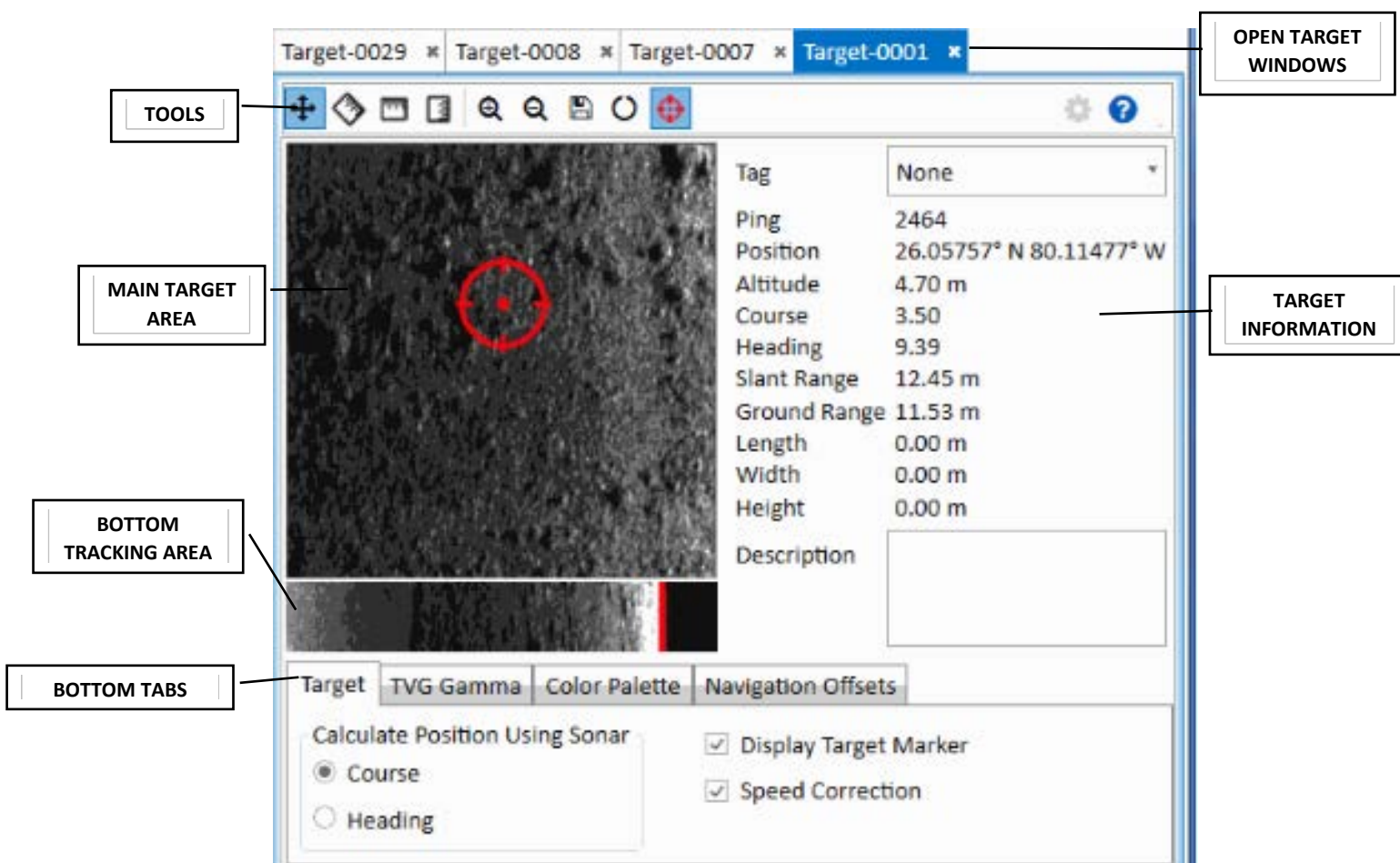


Figure 2-3: Target Windows

The function icons on the top of the target window perform the following (from left-to-right).

- Pan
- Measure the length
- Measure the width
- Measure the height
- Zoom in
- Zoom out
- Save
- Reset altitude
- Display the target marker

Moving the target marker around target area will cause the information on the right-hand side to change depending upon the location. The user can also annotate the target using the Description box, and tag the target as a particular phenomenon using the Tag dropdown box.

The Bottom Tracking confirmation window (below the main viewing area) allows fine adjustment or manual adjustment of the seafloor location for proper target measurement. To manually adjust the seafloor location, click and drag the seafloor marker to the desired spot on the bottom tracking window where the bottom is thought to be.

**NOTE:** Target image will be distorted if bottom tracking was disabled or improperly tracking seafloor in the area where the target was selected.

The target window also has tabs for manipulating the image. These include adjusting the TVG Gamma, changing the Color Palette, and viewing Navigation Offsets.

**NOTE:** For best results, gain and TVG should be set well in Discover. The Target Logger cannot correct poorly set gain and TVG in Discover.



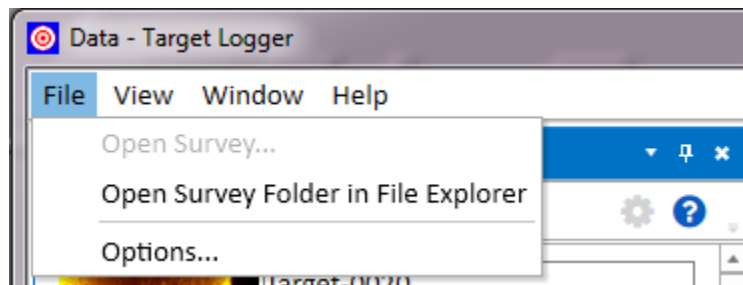
## 2.4 Menu Bar

Target Logger has several additional features accessible from its top menu bar, which are described in detail below.

[FILE MENU](#) | [VIEW MENU](#) | [WINDOW MENU](#) | [HELP MENU](#)

### 2.4.1 File Menu

The File Menu allows the user to open Surveys and edit survey options, including changing the units, window layout, target naming, and generating reports.



*Figure 2-4: File Menu Drop-Down Options*

#### 2.4.1.1 Open Survey

This option is not always visible, as shown in [FIGURE 2-4](#). When it is visible, it allows the user to open a new survey in Target Logger.

#### 2.4.1.2 Open Survey Folder in File Explorer

This will launch the File Explorer, allowing the user to choose another survey and open it in Target Logger.

### 2.4.1.3 Options

This will launch the Options Dialogue box, which is shown in **FIGURE 2-5**. Options will open the same window, as shown in **FIGURE 2-6**, which in turn has options for changing the units, project folder, window layout, target naming and reports.

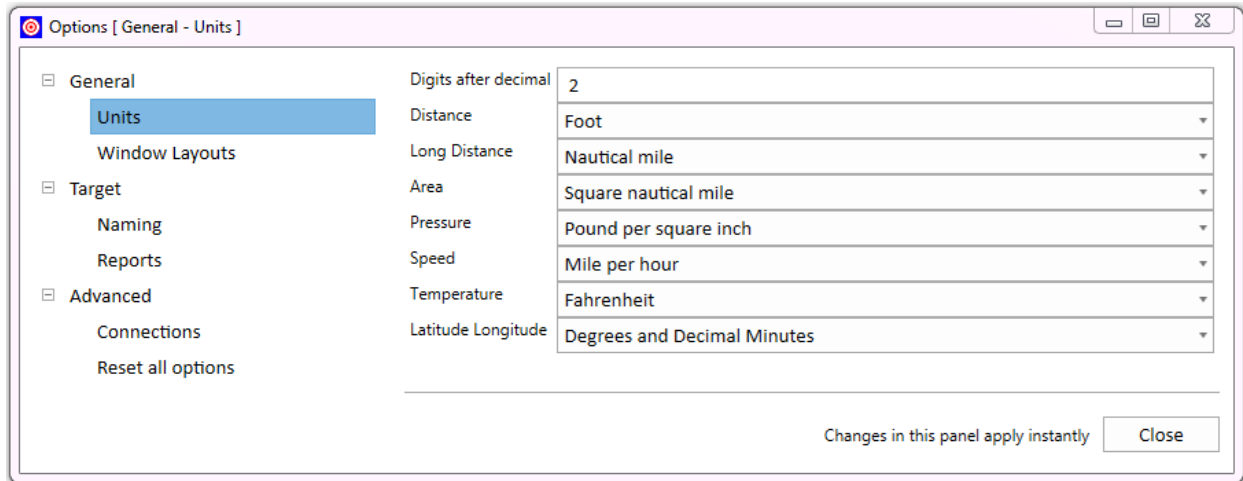


Figure 2-5: Options Dialogue Box

### 2.4.2 Target Reports

A target report is created in the Target Catalog, and can contain one or more targets depending on how many are selected. The report can be saved in a variety of formats, as shown in **FIGURE 2-4**, and is saved to the current target folder.

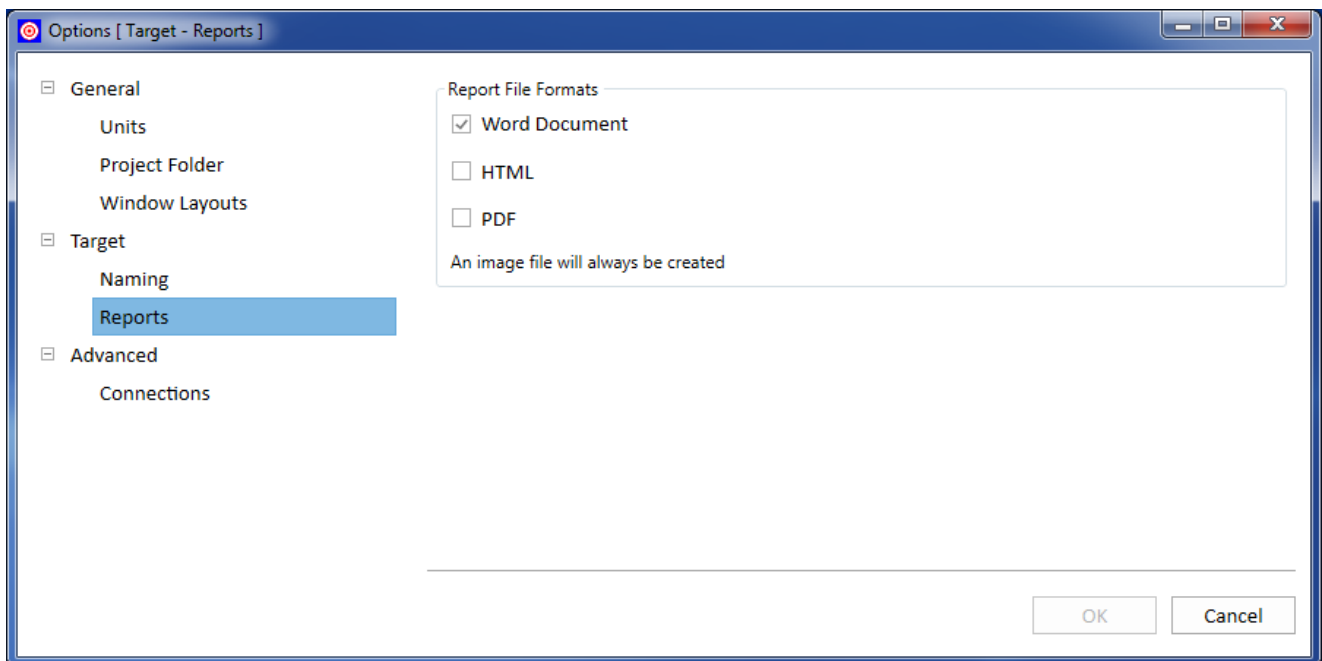


Figure 2-6: Target Reports Window

### 2.4.3 View Menu

The only option in the view menu is the Target Catalog. If Target Catalog is closed, this will relaunch it.

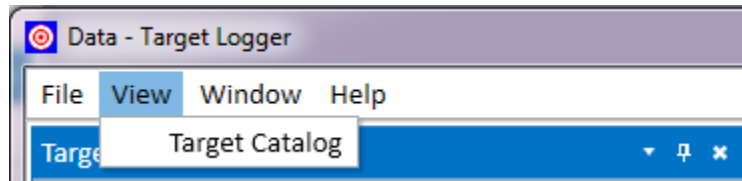


Figure 2-7: View Menu Drop-Down Options

### 2.4.4 Window Menu

The Window menu item allows the user to manipulate window layout options, load old ones, and save new ones.

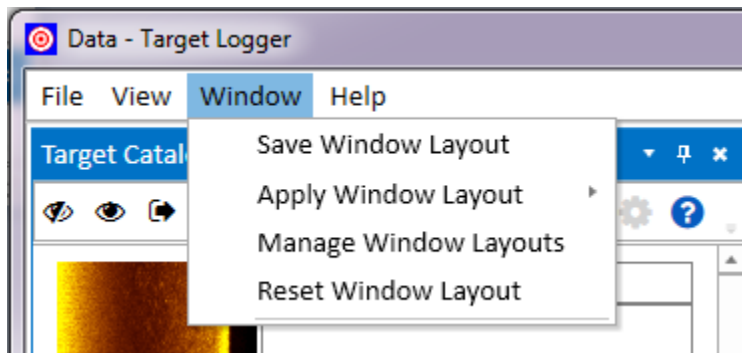


Figure 2-8: Window Menu Drop-Down Options

#### 2.4.4.1 Save Window Layout

Saves the current Windows Layout for future use.

#### 2.4.4.2 Apply Window Layout

Applies a previous Window Layout to current settings.

#### 2.4.4.3 Manage Window Layouts

Allows the user to manage existing Window Layouts.

#### 2.4.4.4 Reset Window Layout

Restores Windows Layout to the fault.

## 2.4.5 Help Menu

The *Help* menu option has a link to the module's help documentation, an about link, and an option for creating a log archive.

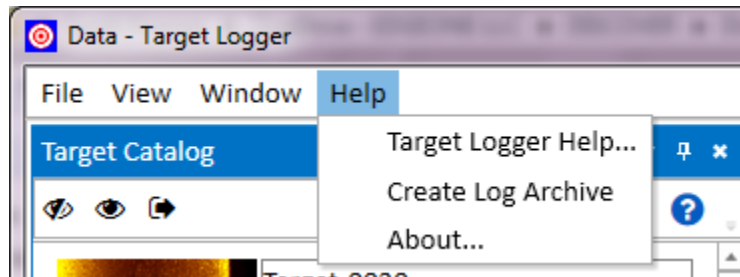


Figure 2-9: Help Menu Drop-Down Options

### 2.4.5.1 Target Logger Help

This activates an interactive Help Menu, which will address most user questions.

### 2.4.5.2 Creative Log Archive

This creates a zip file archive, located on the Desktop.

## 2.4.6 About

Provides information about the current Version of Target Logger.

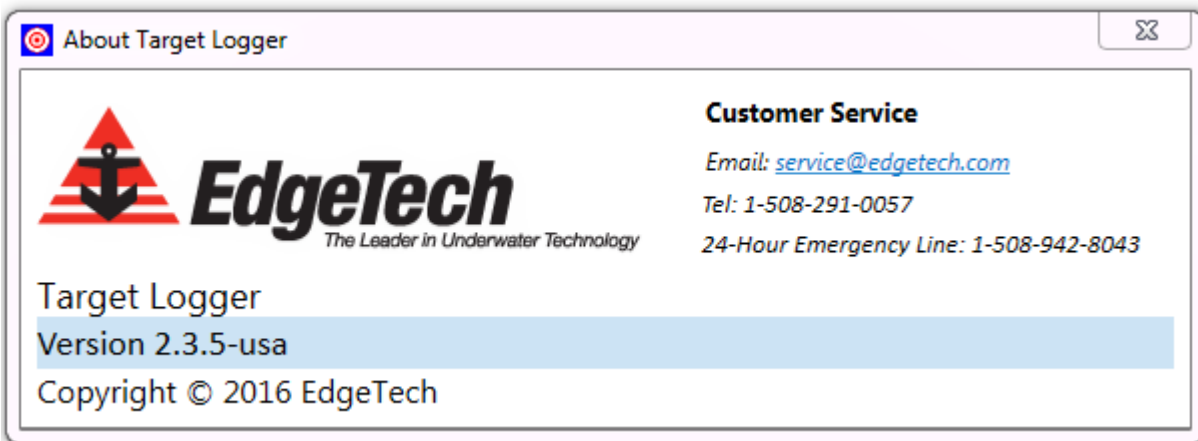


Figure 2-10: About Target Logger

**NOTE:** Contact **EDGETECH CUSTOMER SERVICE** with additional questions.